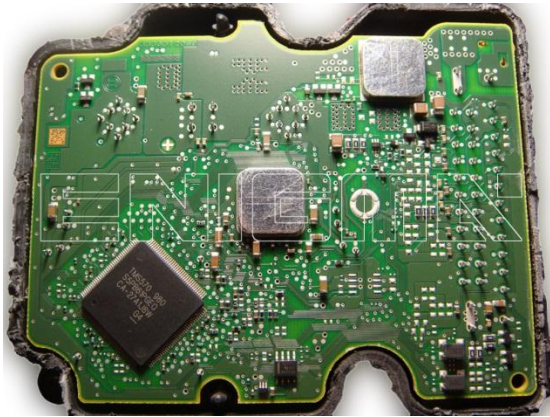


ENIGMA USER MANUAL

RENALUT CLIO ABS MODULE 95640

ABS MODULE BOARD:



REQUIRED CABLE(s): C7



FOLLOW THIS INSTRUCTION STEP BY STEP:

1. Remove the ABS module from the car.
2. Disarm the module to get to the BOARD like shown on PHOTO1.
! Be VERY CAREFULL while disarming, it's very easy to DAMAGE this module !
3. Look at PHOTO2 and solder cables according to the colors.
4. Make sure that the connection you made is secure.
5. Press the READ EEP button and save EEPROM memory backup data.
6. Press the READ KM button and check if the value shown on the screen is correct.
7. Now you can use the CHANGE KM function.

! REMEMBER TO SEAL CORRECTLY THE MODULE AFTER THE WORK IS DONE !



PHOTO 1: Look for connection points like shown on the photo above.



ENIGMA USER MANUAL
RENALUT CLIO ABS MODULE 95640

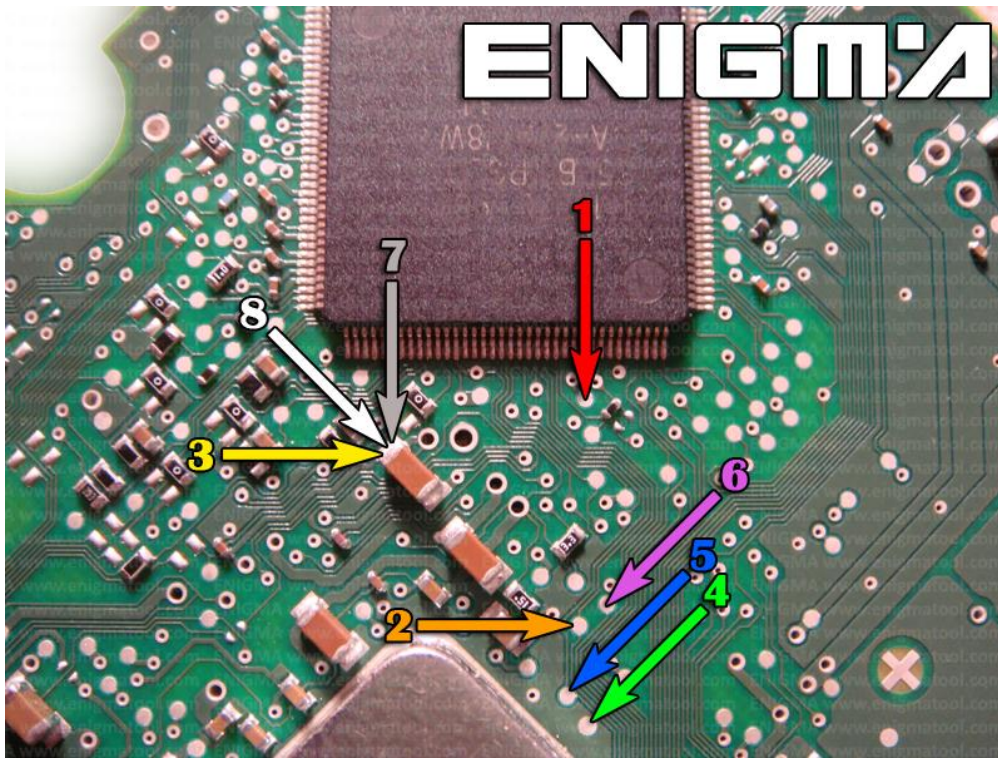


PHOTO 2: Solder C7 cables according to colors like shown on the picture above.

