

ENIGMA USER MANUAL

MERCEDES SL - W230 EZS HC9S12

EZS HC9S12 AND LOCATION:



REQUIRED CABLE(S): C45 + A6



FOLLOW THIS INSTRUCTION STEP BY STEP:

1. Remove the EZS module from the car and open it **VERY CAREFULLY!**
2. Remember to connect the A6 ADAPTER to the machine.
3. Solder C45 cables to the points on board as shown on PHOTO1.
4. Make sure that the connection you made is secure.
5. Use MOTOROLA SECURED EDITOR to save EEPROM and FLASH backup data.
6. Now you can use the CHANGE KM function.

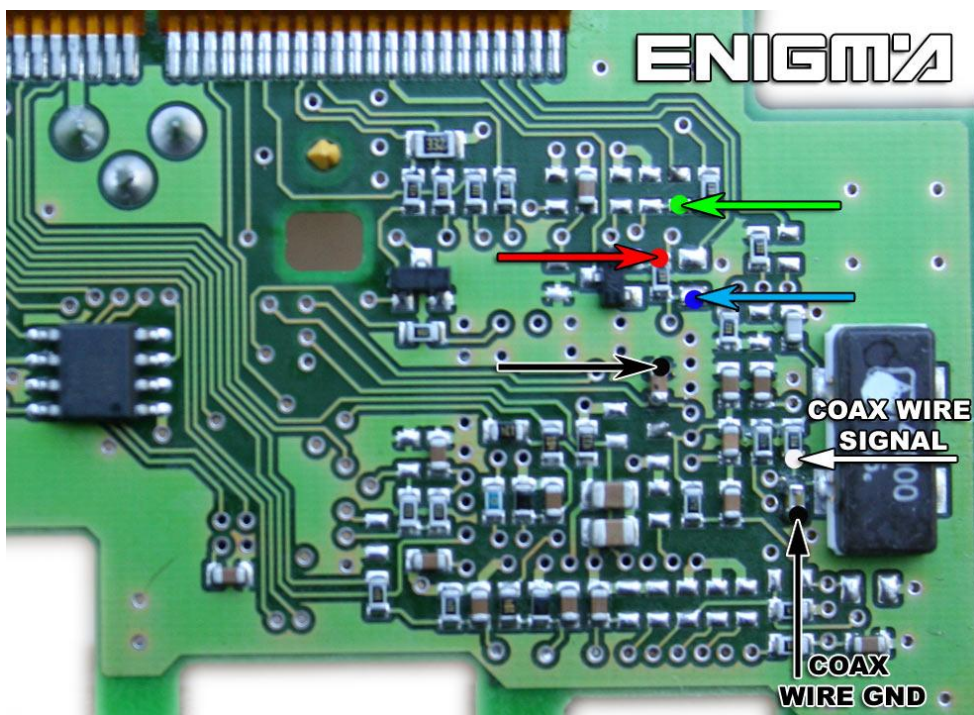


PHOTO 1: Solder C45 cables according to the colors like shown on the photo above.

