

ENIGMA USER MANUAL
ALFA ROMEO 146 HC705B16 0D28J

DASHBOARD PHOTO:



**REQUIRED CABLE(s):
C11**



FOLLOW THIS INSTRUCTION STEP BY STEP:

1. Remove the dashboard and open it carefully.
2. Open the dash carefully to get to front part of the main board.
3. Solder cable C11 to the points on as shown on PHOTO1.
4. Make BRIDGE like shown on PHOTO2.

! VERY IMPORTANT !

! REMEMBER TO LIFT PIN 19 AND 21 FROM THE PROCESSOR !

! MAKE SURE TO CONNECT LIFTED PINS TO RESISTOR SHOWN ON PHOTO 1 !

! AFTER THE JOB IS DONE, SOLDER LIFTED PINS BACK TO THEIR PLACES !

! DO EXACTLY AS PDF SAYS, OTHERWISE YOU WILL ERASE PROCESSOR DATA !

5. Make sure that the connection you made is secure.
6. Use the MOTOROLA EDITOR to save memory backup data.
7. Press the READ KM button and check if the value shown on the screen is correct.
8. Now you can use the CHANGE KM function.



ENIGMA USER MANUAL
ALFA ROMEO 146 HC705B16 0D28J

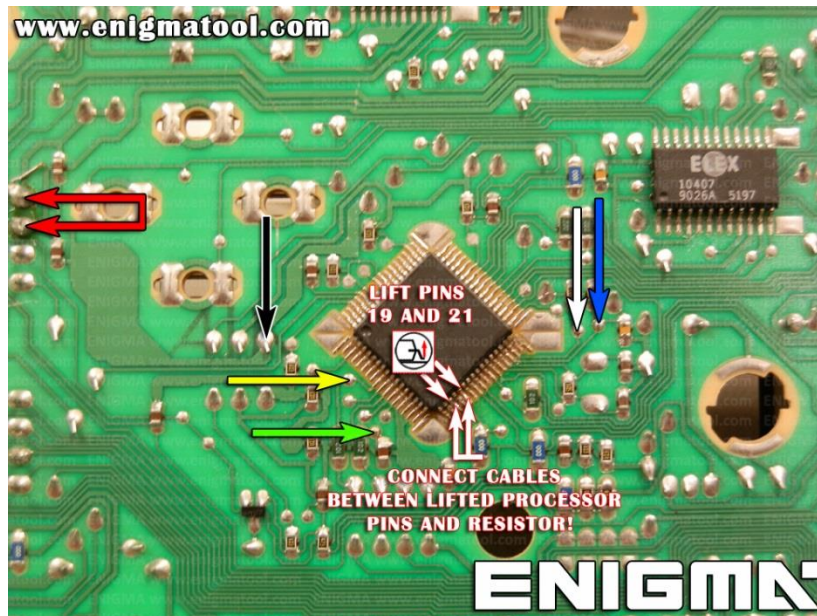


PHOTO 1: Solder cables according to the colors like shown on the photo above.

www.enigmatool.com

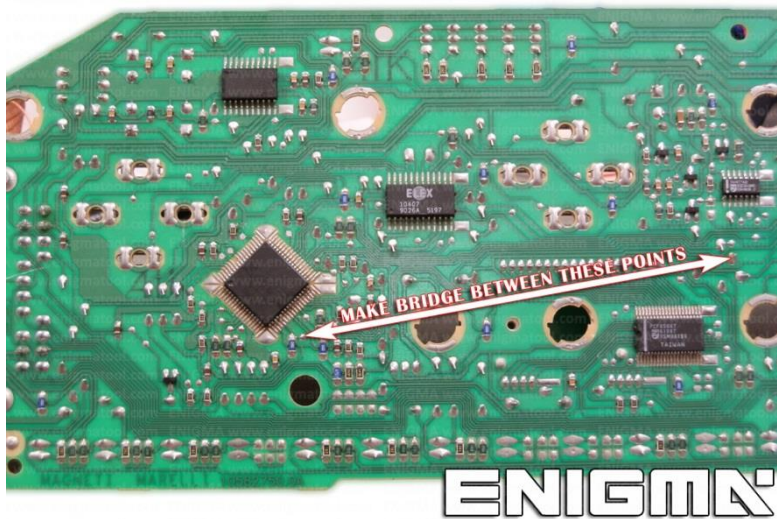


PHOTO 2: Make BRIDGE between two points as shown on the photo above.

